


Planting Tips: Balled & Burlap



1. Dig hole 2-3 times the width of root ball.
2. Set top of root ball 1" above ground level.
3. Straighten plant and partially backfill; remove rope and burlap wrapped around trunk. Keep wire basket on. Cut loops off top of basket, or bend down in hole.¹
4. Fill hole with 80% existing soil, 20% soil amenities (soil conditioner, peat moss, compost).
5. Pack soil down as you fill in hole: use water and/or heel of your foot.
6. Create lip around exterior of root ball by mounding soil in a "saucer" shape.
7. Apply 2" of mulch, keeping it away from trunk/stems of plant.
8. Prune to remove broken, damaged or dead branches.

*** Check your plant's tag: this is a good guideline for its basic needs ***
(i.e. plant in sun, shade, wet spots, etc.)

Figure 1: Removal of basket loops

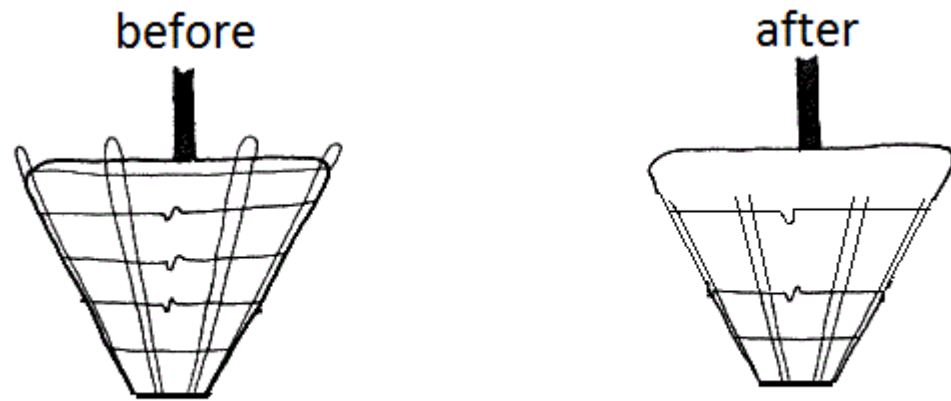
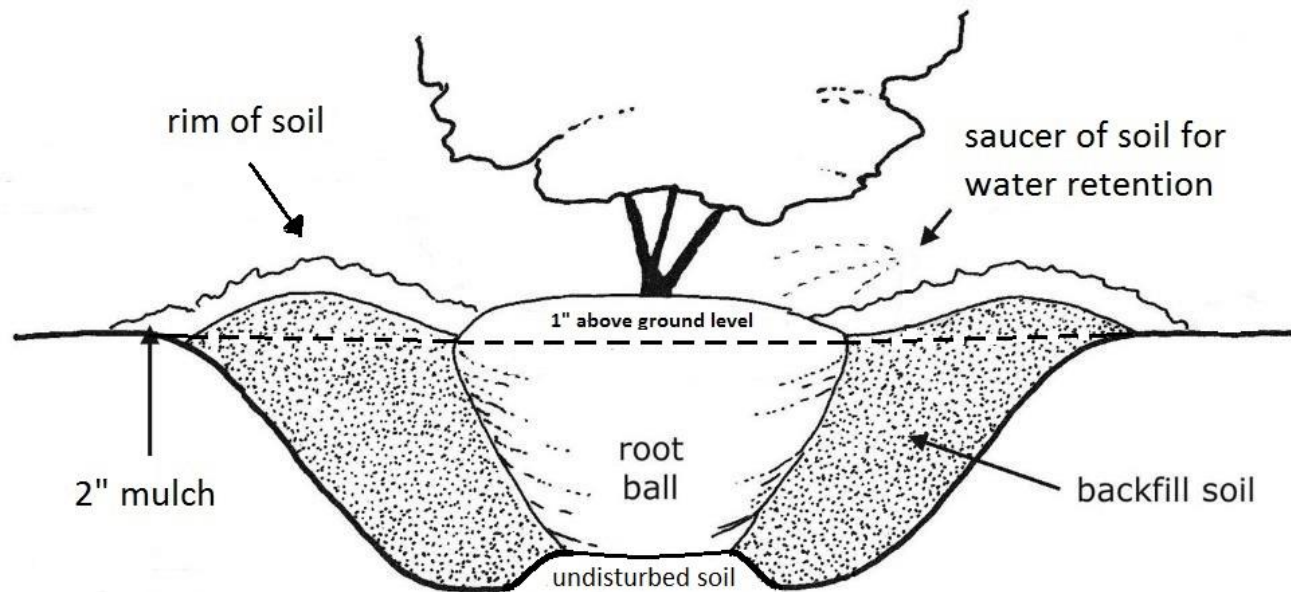


Figure 2: Planting diagram



¹ See figure #1