

# Planting Tips: Containers



1. Dig hole 2-3 times the width of root ball.
2. Remove plant from container. Set top of root ball 1" above ground level. Shave  $\frac{1}{4}$ " off exterior of root ball.<sup>1</sup>
3. Fill hole with 80% existing soil, 20% soil amenities (soil conditioner, peat moss, compost).
4. Pack soil down as you fill in hole: use water and/or heel of your foot.
5. Create lip around exterior of root ball by mounding soil in a "saucer" shape.
6. Apply 2" of mulch, keeping it away from trunk/stems of plant.
7. Prune to remove broken, damaged or dead branches

\* **Check your plant's tag: this is a good guideline for its basic needs** \*  
(i.e. plant in sun, shade, wet spots, etc.)

Figure 1: Shave  $\frac{1}{4}$ " off root ball

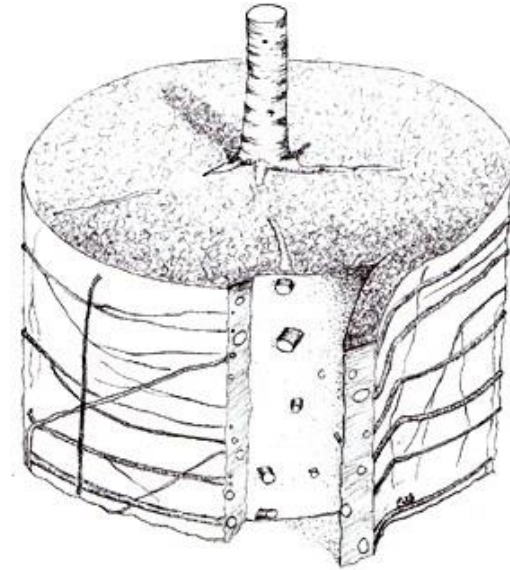
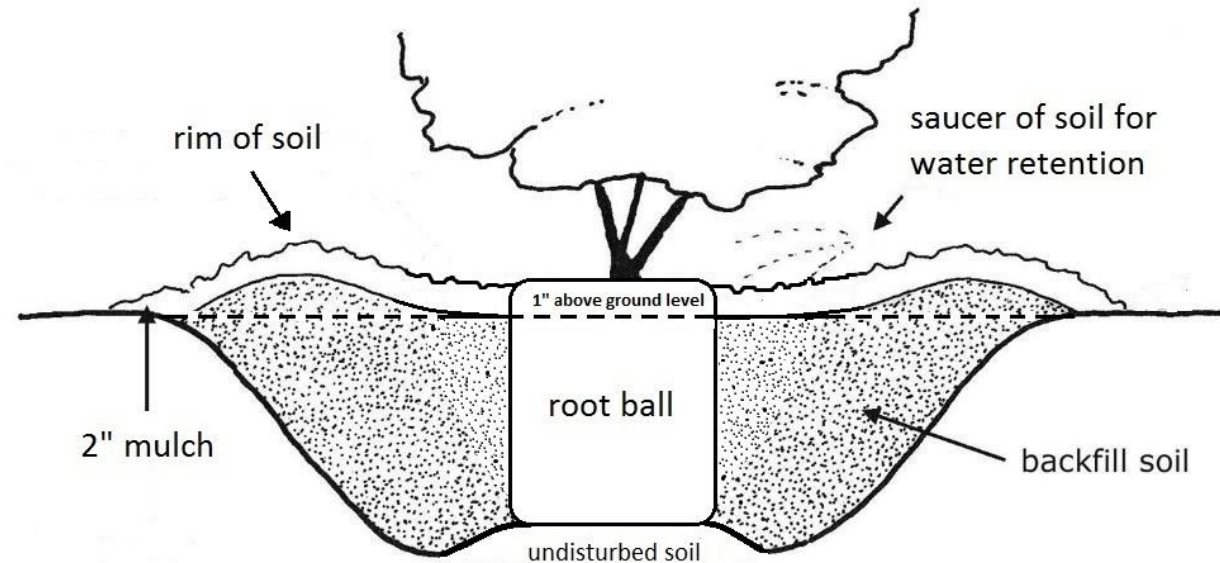


Figure 2: Planting diagram



<sup>1</sup> See Figure #1 – If plant is "root-bound." Ask technician for details/view [www.plantingthefuture.com](http://www.plantingthefuture.com)